

# Agenda Item 6

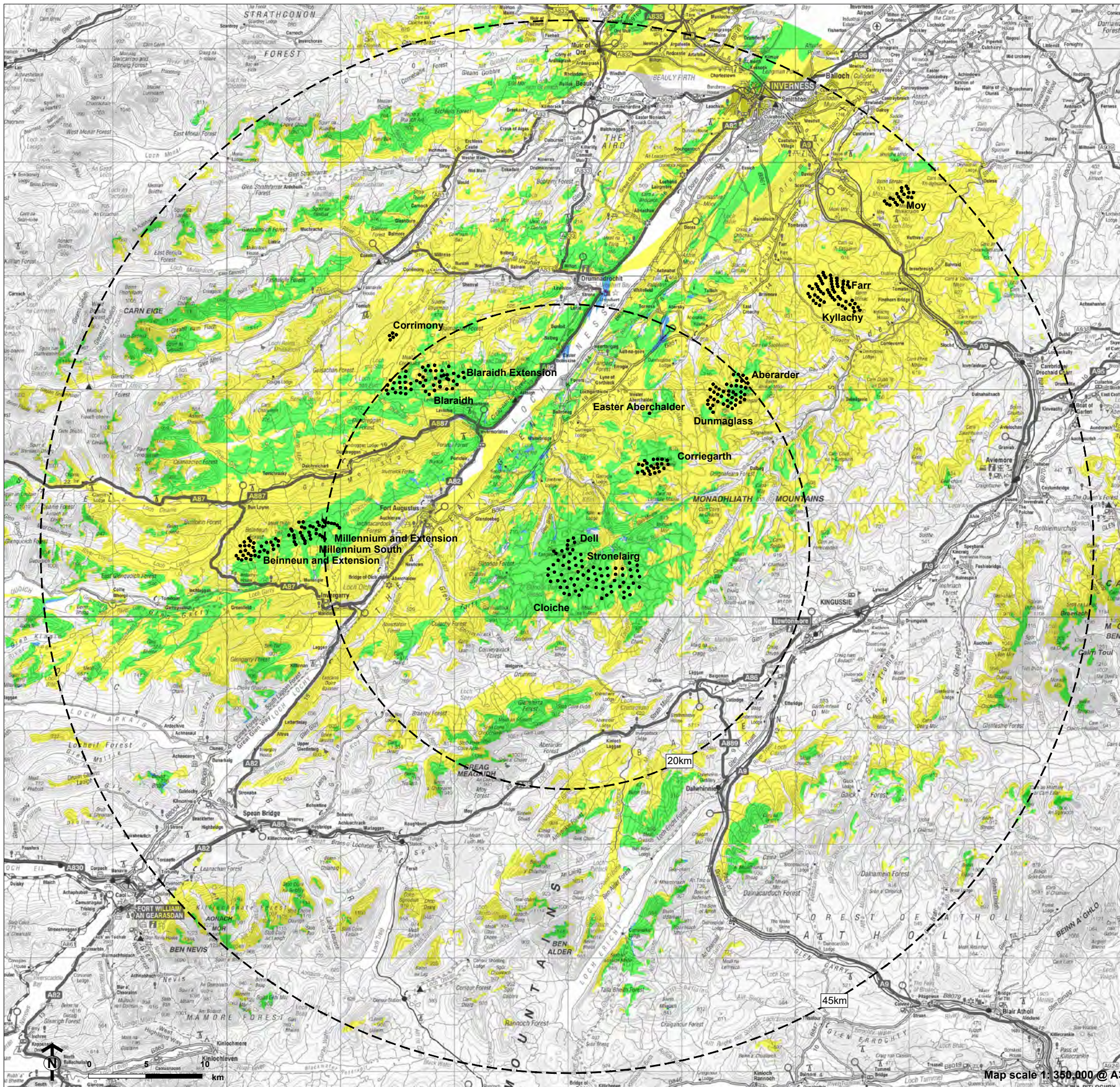
## Appendix 2

2024/0068/PAC

Dell 2 windfarm

Cumulative ZTV

Figure 4.5.1: Cumulative Blade Tip ZTV - Dell with All Built and Consented Sites



Proposed Turbine Locations

Study Areas

Wind Farm Visibility:

Dell

All built and consented sites

Dell with all built and consented sites

NOTES: Calculated using Earth's curvature (radius 6360km) and atmospheric refraction coefficient of 0.075.  
Terrain data is derived from OS Terrain 50 gridded height data.  
ZTV calculation does not take into account any surface features such as trees and buildings.  
Blade tip height - 200m / 180m  
ZTV view height - 2m  
ZTV calculation resolution - 50m